

Traffix Diameter Gateway Key Benefits

- ⇒ Enables instant Diameter connectivity to any AAA protocol
 - RADIUS
 - SOAP/XML
 - WebServices
 - COPS
 - LDAP
 - HTTP
 - CAMEL
 - GTP'
- ⇒ Cost effective implementation based on reducing implementation efforts and ad-hoc programming
- ⇒ Mitigate risk by deploying a proven product
- ⇒ Supports over 50 Diameter interfaces (3GPP(Rel. 7,6,9), TISPAN, PackCable)

The Traffix Diameter Gateway is an important part of the Diameter control plane architecture. This technology is essential in supporting the introduction of Diameter based network elements into the telecom network.

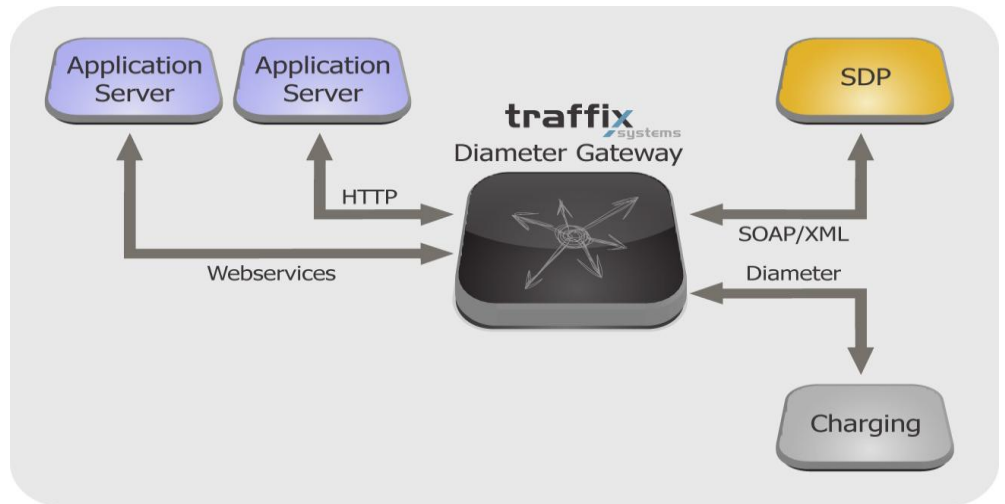
Upon receipt of an incoming transaction, the Traffix Diameter Gateway analyzes the received data, transforms it to the destination protocol form and forwards the request outward to the final destination. Upon receipt of an answer, the Traffix Diameter Gateway transforms it back to the originating protocol form and sends it outward to the request originator. The entire transformation and mapping process is executed with high accuracy and minimal processing delay maintaining negligible latency even at significant loads.

Traffix Diameter Gateway is offered in several load configurations across several standard Telco-grade platforms. The platform can handle up to 20,000 transactions per second. Larger capacity options are also enabled by utilizing scalable hardware configuration.

Deployment Scenarios

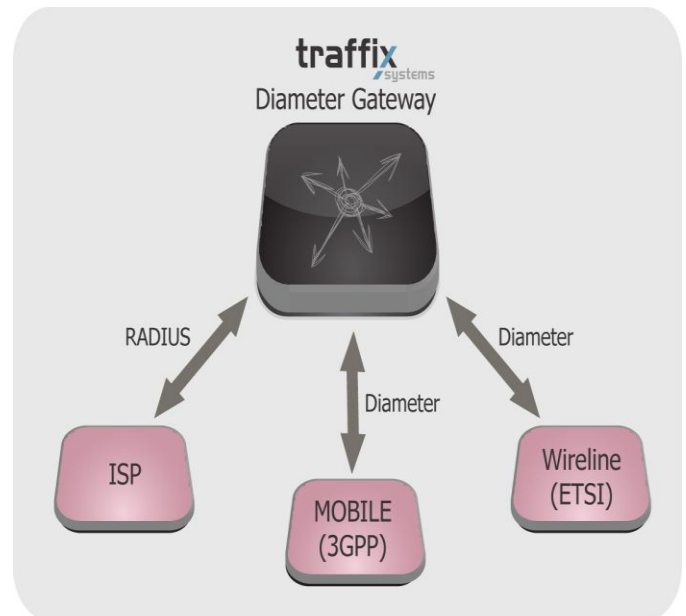
Simple Legacy to NGN Connection

The Traffix Diameter Gateway enables to connect and align telecom services and functionalities across Legacy protocols such as RADIUS, LDAP, HTTP and XML and Diameter control plane protocol domains, utilizing an existing service infrastructure, and enabling unified subscriber management, services and billing.



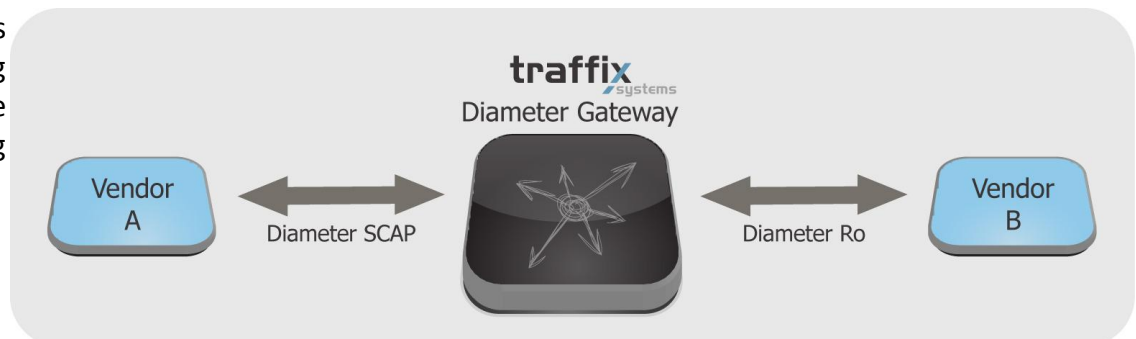
True Cross Network Control and Singling

The Traffix Diameter Gateway enables operators to achieve cross network control plane and signaling connectivity. The Diameter Gateway aligns signaling connectivity between different technologies and standard interfaces, and brings together Mobile, WiMax; Wi-Fi and Wireline networks control handling.



Multi Vendor Environment

The Traffix Diameter Gateway allows network architects to choose the optimal equipment and services from various vendors, without worrying about control plane integration and signaling issues.



Summary

Traffix Diameter Gateway is part of Traffix Diameter and control plane product line that Service Providers can exploit to their advantage. Some of the Traffix Diameter Gateway major benefits:

- ⇒ Enables new services and revenue models
- ⇒ Bridges legacy and control plane transactions
- ⇒ Minimizes vendor incompatibilities
- ⇒ Caps and minimizes legacy investments



Traffix Diameter Gateway Technical Overview

Protocol support

- ⇒ Diameter Base
- ⇒ 3GPP/ TISPAN/PacketCable Diameter interfaces
- ⇒ RADIUS
- ⇒ LDAP
- ⇒ HTTP
- ⇒ SOAP
- ⇒ XML
- ⇒ CORBA
- ⇒ CAMEL
- ⇒ GTP'
- ⇒ COPS

Transport

- ⇒ IPv4, IPv6
- ⇒ TCP, SCTP, UDP
- ⇒ TLS, IPsec, CMS

Performance and Availability

- ⇒ High Availability –
- ⇒ Standard Telco Grade
- ⇒ Up to 20,000 TPS
- ⇒ Add/remove servers on the fly
- ⇒ Dynamic mapping

Management

- ⇒ Easy & Secure Web-based user interface
- ⇒ Real-Time health & performance monitoring
- ⇒ SNMP V2 support
- ⇒ Remote Automated maintenance and update
- ⇒ ACL and SSL protection
- ⇒ Detailed Traffic statistics and analytics
- ⇒ Automated configuration backups
- ⇒ Application Programming Interface (API)
- ⇒ Dynamic Configuration changes
- ⇒ Protocol Logging mode for testing

Contact Us

Traffix Systems
Fortis House
160 London Road
Barking, Essex IG11 8BB

Email info@traffixsystems.com

Phone: +44 (0)20 8214 1384

Website www.traffixsystems.com